

TopPage>>Search Result>>7228B

Angular Contact Ball Bearings

Bearing No. : **NACHI 7228B**

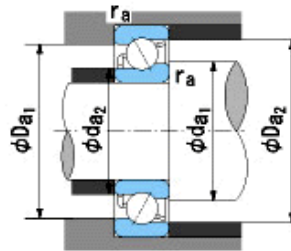
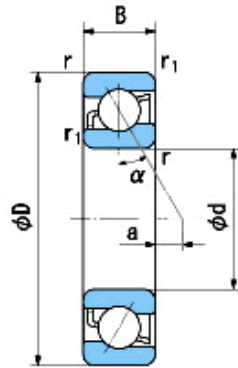
■ Bearing Type

■ Clearance

■ Tolerance Class

Dimensions

d = 140⁰_{-0.025}
 D = 250⁰_{-0.030}
 B = 42⁰_{-0.250}
 r = 3~5
 (Radial Direction)
 r = 3~8
 (Axial Direction)
 r1 = 1.1~2.5
 (Radial Direction)
 r1 = 1.1~4
 (Axial Direction)
 a = 60.8



Dimensions

da1(min) = 154
 da2(min) = 147
 Da1(max) = 236
 Da2(max) = 243
 ra(max) = 2.5
 ra1(max) = 1
 Mass = 8.78 kg

Basic Dynamic Load Rating Cr : **197,000** N

Basic Static Load Rating Cor : **214,000** N

Limiting Speed ;

Grease Lubrication : **2,000** min⁻¹

Oil Lubrication : **2,600** min⁻¹

O.D.Surface Runout with Side :

Axial Runout with Bore :

Axial Runout with Raceway :

Width Variation :

Radial Runout :

INNER RING

OUTER RING

-

-

-

0.030

0.030

-

-

-

0.030

0.050